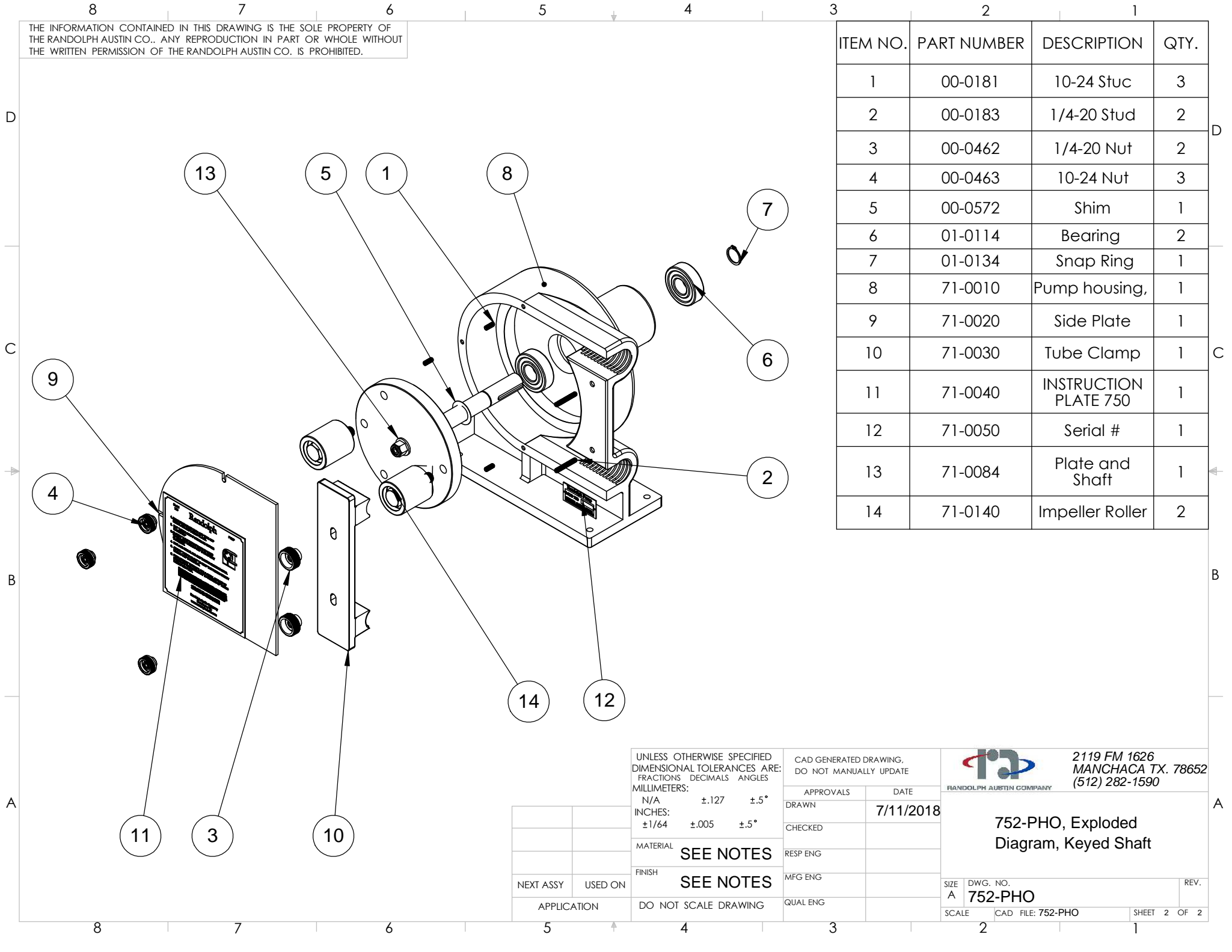


THE INFORMATION CONTAINED IN THIS DRAWING IS THE SOLE PROPERTY OF THE RANDOLPH AUSTIN CO.. ANY REPRODUCTION IN PART OR WHOLE WITHOUT THE WRITTEN PERMISSION OF THE RANDOLPH AUSTIN CO. IS PROHIBITED.



ITEM NO.	PART NUMBER	DESCRIPTION	QTY.
1	00-0181	10-24 Stuc	3
2	00-0183	1/4-20 Stud	2
3	00-0462	1/4-20 Nut	2
4	00-0463	10-24 Nut	3
5	00-0572	Shim	1
6	01-0114	Bearing	2
7	01-0134	Snap Ring	1
8	71-0010	Pump housing,	1
9	71-0020	Side Plate	1
10	71-0030	Tube Clamp	1
11	71-0040	INSTRUCTION PLATE 750	1
12	71-0050	Serial #	1
13	71-0084	Plate and Shaft	1
14	71-0140	Impeller Roller	2

UNLESS OTHERWISE SPECIFIED
 DIMENSIONAL TOLERANCES ARE:
 FRACTIONS DECIMALS ANGLES
 MILLIMETERS:
 N/A ±.127 ±.5°
 INCHES:
 ±1/64 ±.005 ±.5°

CAD GENERATED DRAWING.
 DO NOT MANUALLY UPDATE

 2119 FM 1626
 MANCHACA TX. 78652
 (512) 282-1590

NEXT ASSY	USED ON
APPLICATION	

MATERIAL **SEE NOTES**
 FINISH **SEE NOTES**
 DO NOT SCALE DRAWING

APPROVALS	DATE
DRAWN	7/11/2018
CHECKED	
RESP ENG	
MFG ENG	
QUAL ENG	

**752-PHO, Exploded
 Diagram, Keyed Shaft**

SIZE A	DWG. NO. 752-PHO	REV.
SCALE	CAD FILE: 752-PHO	SHEET 2 OF 2